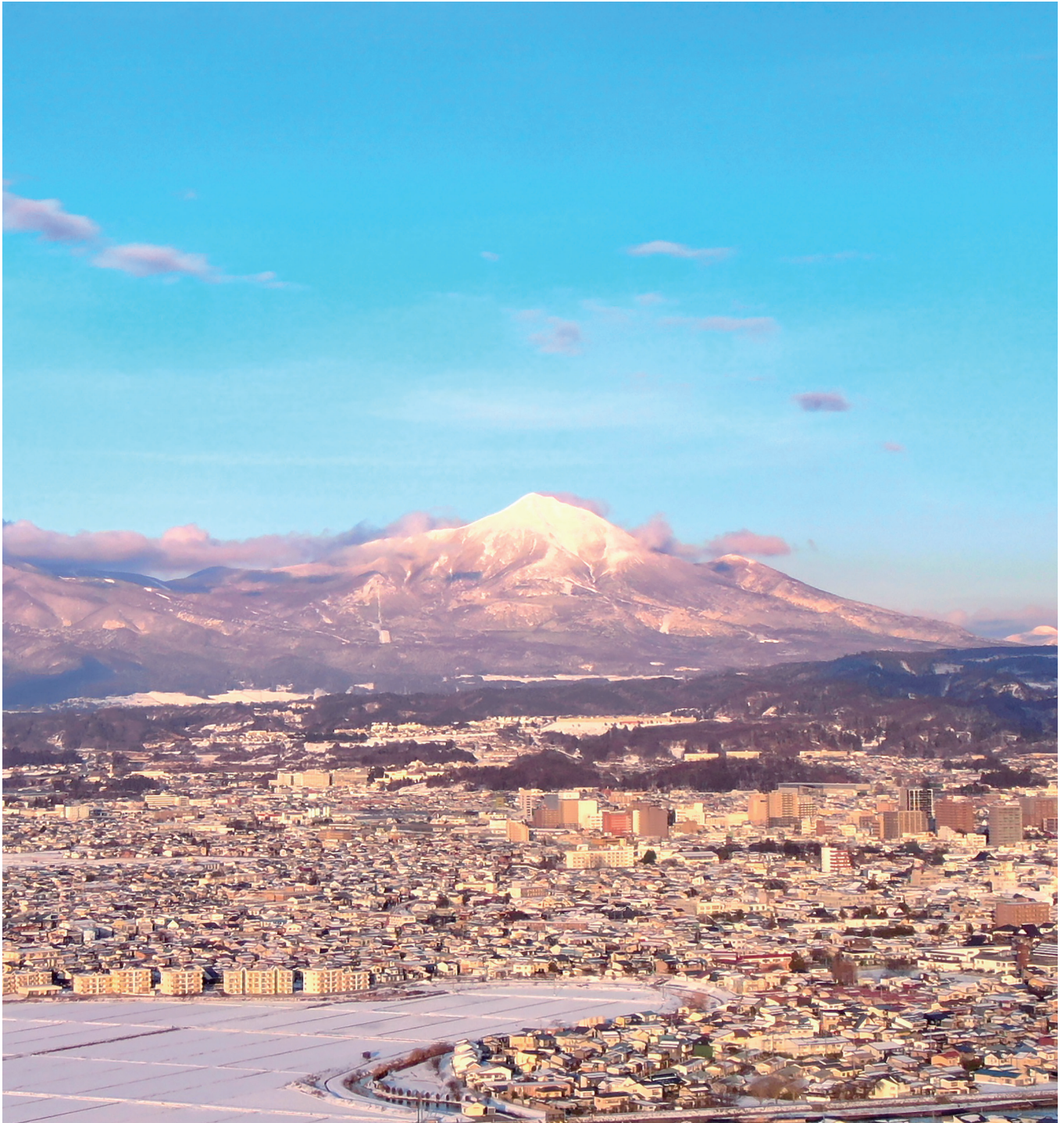


Aizu Wakamatsu City Information

Published by Aizuwakamatsu City

February 2021



**Opinions, Suggestions
Change of Address, Subscriptions**
Secretarial and Public Hearing Division
Phone: 0242-39-1206
Fax: 0242-39-1402
Email:
hisho@tw.city.aizuwakamatsu.fukushima.jp

This newsletter is published by the
Public Relations Section of City Hall,
and is comprised of translated excerpts
from the monthly Japanese newsletter,
“Shisei Dayori”.

Language Assistance
The Aizu Wakamatsu International Association
Open: 9am-5:45pm
Phone: 0242-27-3703 Fax: 0242-27-3704
E-mail: mail@awia.jp
Holidays: Every Monday, 1st and 3rd Sun-
day, and national holidays.

Special Report

How ICT Technology Improves Water Service

In order to counteract some of the issues that arise from a declining population and shrinking workforce, efforts are being made across the nation to adopt new technologies. In Aizu Wakamatsu, we have been working under the “Smart City Aizu Wakamatsu” initiative to improve various aspects of the city’s infrastructure with ICT technology, including health and wellness, education, disaster-prevention, energy, and water services. In this special report, we will introduce the role of technology in one of our city’s most important pieces of infrastructure, our water supply.

(How Running Water Protects Health)

The mission of the water service in Aizu is “to always provide clean and affordable water in abundance.” In the unlikely event that the water service had to be stopped due to a functional error at the water



purification plant or an accident causing water leakage, every citizen would be heavily affected. Especially now, as we grapple with the coronavirus pandemic, clean running water is more vital than ever for washing hands and maintaining sanitation and safety.

(Preventing Water Outages with Technology)

In Aizu Wakamatsu, we are putting new initiatives in place to ensure that we can continue to provide necessary running water well into the future. More specifically, we have been working to integrate the following 3 technologies into city water services. First, we are integrating AI systems that monitor the status of underground pipelines. Second, we are adopting “Water Service Maintenance Information Systems,” which manage pipeline maintenance information by utilizing IoT technology to reduce errors in human communication. Finally, we are incorporating pipeline surveillance systems which detect potential water leaks by monitoring water pressure and acoustics near pipelines.

By “digitalizing” the water system in this way, we hope to provide water services that all residents can use with peace of mind. Integrating technologies like these allow the city’s water service, as well as other areas of our city’s infrastructure, to work more efficiently. Furthermore, by installing digital monitoring systems we are able to detect potential problems before they occur, and make repairs to prevent more severe damage. In doing so, we believe we can provide a safer place to live for all our city residents.

(Conclusion)

Just by turning a faucet, clean running water will come pouring out of the tap. This simple part of everyday life is sustainable thanks to extensive management and monitoring via ICT and IoT technologies. These technologies support our everyday lives in a wide variety of ways. For example, technology plays an important role in detecting potential water leaks caused by deteriorated sewage pipes or concrete structures like tunnels and bridges. Digital technology is an indispensable tool that can solve many social issues related to city infrastructure. As such, the continued development of Smart Cities that utilize technology is critical to maintaining residents’ safety. Moving forward, Aizu Wakamatsu will continue to incorporate new technology, and take steps toward the “Aizu of the Future.” We will strive to create a technology-driven “Super City,” where all residents can live their best lives.

“Super City Initiative” Strategies – Share Your Thoughts–

Su-pa-sitiikousou ni kansuru jigyouan no osirase to iken no bosyuu
スーパーシティ構想に関する事業案のお知らせと意見の募集

(Open Town Hall Meeting)

The mayor will speak in detail about Aizu’s “Super City” initiatives and listen to feedback from the community.

- ▼ Time: February 16th (Tue), 18:30 – 20:00
- ▼ Place: Aizu Wakamatsu City Culture Center
- ▼ Attendees: Those living, working, and/or studying in Aizu Wakamatsu
- ▼ Capacity: 150 participants (in order of arrival)
- ▼ How to Register:
 - Sign-up on the Aizuwakamatsu City homepage
 - Contact by phone or fax
- ※ For registration by fax, please include your name, occupation, and contact information (E-mail address or phone number).
- ▼ Registration Period: February 1st (Mon) – 12th (Fri)

(Watch Online)

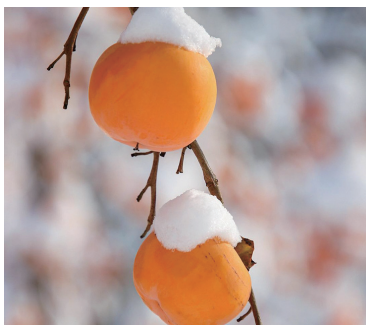
A video of the mayor’s town hall presentation will be uploaded to the city homepage on the following day.

(Share Your Thoughts on Aizu’s Super City Initiatives)

In order for Aizu Wakamatsu to take part in the national “Super City Initiative,” we would like to collect feedback from the community regarding new technology integration. An outline of Super City initiatives is now available on the City homepage. (Japanese)

- ▼ How to submit feedback:
 - Please fill out the designated form and return it to the Planning and Coordination Division by E-mail, fax, post, or in person.
 - ※ The feedback form can be downloaded from the city homepage.
- ▼ Acceptance Period: February 9th (Tue) – March 19th (Wed)
- **Contact...** Secretarial and Public Hearing Division
(☎ 0242-39-1245)

Instagram
insutaguramu
インスタグラム



This charming shot of local Mishirazu persimmons capped with snow truly captures the atmosphere of Aizu’s winter season.

- **Contact...** Secretarial and Public Hearing Division
(☎ 0242-39-1245)

Special Report: Aizu Children’s Education in 2021

Aizu Kyouiku tokusyu 2021
会津教育特集2021



“Fostering dignified children of Aizu through admiration, education, and integrity.”

In Aizu, we believe that “investing in a town is investing in its people.” In order for the city to move sustainably into the future, it is essential that we invest in the generation that will inherit that future. In order for the children of Aizu to fulfil their role, we have been working alongside our citizens to foster a new generation that can move into the future with confidence and pride in their hometown. By starting with a solid academic foundation, we are working to pass down the history and culture of Aizu to the next generation, in keeping with the “Children of Aizu Proclamation.” The following points summarize some of the steps that are being taken in Aizu Wakamatsu to achieve this vision.

(Efforts to Advance Academic Ability)

Last year, each elementary and junior high school in Aizu Wakamatsu was equipped with digital whiteboards for the classrooms. Schools are also working to incorporate more digital teaching materials into lessons. Moving forward, the city plans to equip each elementary and junior high school student with their own learning tablet, which can be used in class.

Finally, the city is also striving to improve academic ability by conducting independent mock examinations.

(Project for the Promotion of Human Resources)

One of the goals of this project is to foster a generation of young people that take pride in their hometown by cooperating with local people and businesses to teach students about the history and traditions of Aizu, as well as to make them more aware of local industries and jobs.

- **Contact...** Secretarial and Public Hearing Division
(☎ 0242-39-1245)

Information Regarding the Novel Coronavirus

Shingata corona uirusu kansensyou jouhou
 新型コロナウイルス感染症情報

(Request to All City Residents)

- Please refrain from all unnecessary outings from now until February 7th (Sun), especially after 8:00p.m.
- Please avoid travel to and from areas included in the national state of emergency. (Tokyo, Kanagawa, Saitama, Chiba, Tochigi, Gifu, Aichi, Kyoto, Osaka, Hyogo, Fukuoka)

※Necessary outings include activities related to mainting health and wellness, visits to medical facilities, purchase of food, medicine, and other essentials, commuting to work, and exercising.

●Contact... Welfare Division(☎ 39-1245)

Holiday Garbage Disposal Notice

Syukujitu no gomi syuusuu
 祝日のゴミ収集

Please put separated garbage and recycling at the designated location by 8:30a.m. on the correct day according your local collection schedule.

(Holiday Garbage Collection Notice)

On February 11th (Thu) and February 23rd (Tue), only non-burnable trash will be collected in areas where the 11th and 23rd are scheduled for non-burnable collection.

●Contact... Waste Management Division(☎ 27-3961)

Community Pool Information (Feb.)

Komyuniti Pu-ru no Kaikanbi (2gatsu)
 コミュニティプールの開館日 (2月)

The pool is open on the following days.

Sun.	Mon.	Tues.	Wed.	Thur.	Fri.	Sat.
	1	2	3	4	5	6
					×	×
7	8	9	10	11	12	13
×	×	×	×	×	×	○
14	15	16	17	18	19	20
○	○	×	○	○	○	○
21	22	23	24	25	26	27
○	○	○	○	○	○	○
28						
○						

Open Hours (×Closed): ○ 9: 00 am- 9: 00pm



After-Hours Pharmacies

Kyuuujitsu touban Yakkyoku
 休日当番薬局

February 7th (Sun)	<ul style="list-style-type: none"> ●Machino Yakkyoku Ogimachi-ten(Sinyoko-machi ☎ 37-1766) ●Kusunoki Yakkyoku(Byakko-machi ☎ 39-0311) ●Ibuki Yakkyoku(Ikki-machi Tsuruga ☎ 37-1380) ●Sebunsu Yakkyoku Aizuwakamatsu-ten (Nishinanuka-machi ☎ 39-6988)
February 11th (Thu)	<ul style="list-style-type: none"> ●Hiro Yakkyoku(Monden-machi Hiyoshi ☎ 36-5582) ●Tsuruga Yakkyoku(Ikki-machi Tsuruga ☎ 23-9119) ●Orenji Yakkyoku(Syouwa-machi ☎ 93-6301)
February 14th (Sun)	<ul style="list-style-type: none"> ●Iseki Yakkyoku(Oo-machi ☎ 22-0363)
February 21st (Sun)	<ul style="list-style-type: none"> ●Fa-marazuYakkyoku Iimori-ten (Nakajima-machi ☎ 39-3591) ●Be-su Yakkyoku Yamamimachi-ten (Yamami-machi ☎ 93-6330) ●Keyaki Yakkyoku(Oo-machi ☎ 29-5252)
February 23rd (Tue)	<ul style="list-style-type: none"> ●Kosumo chouzai Yakkyoku Yonedai-ten (Yonedai 1-chome ☎ 38-3850) ●Machino Yakkyoku Ogimachi-ten (Ogi-machi ☎ 37-1766) ●Mizuki Yakkyoku(Ikki-machi Kamega ☎ 37-3088) ●Seki Yakkyoku(Nishisakae-machi ☎ 27-1277)
February 28th (Sun)	<ul style="list-style-type: none"> ●Ain Yakkyoku Aizuapio-ten(Inta-nishi ☎ 37-1193) ●Ibuki Yakkyoku(Ikki-machi Tsuruga ☎ 37-1380) ●Iseki Yakkyoku(Oo-machi ☎ 22-0363)

Radiation Doses as of January 15th

housyasenryou jouhou 1gatu 15 niti
 放射線量情報 (1/15)

Measurement Location	Measured Value	Measurement Location	Measured Value
Aizu Wakamatsu CityHall	0.07	Kita Public Hall	0.07
Aizu Wakamatsu Station	0.05	Kozashi-machi Takaku	0.05
Higashiyama Elementary School	0.08	Kozashi-machi Kitashigo	0.05
Iimoriyama Mountain Tourist Information Center	0.05	Kawahigashi-machi Takatsuka	0.05
Ikki-machi Tsuruga	0.04	Kawahigashi-machi Kumanodo	0.06
Matsunaga Danchi	0.04	Kawahigashi-machi Hirota	0.04
Yanagiwara-machi	0.04	Kitaazizu-machi Shimoarai	0.05
Monden-machi Niidera	0.05	Kawanami Elementary School	0.08
Minami Public Hall	0.07	Oto Public Hall	0.05
Aizu General Athletic Park	0.06	Minato Citizen's Center	0.02

After-Hours Medical Facilities

Kyuujitsu touban lin
休日当番医院

February 7th (Sun)	Internal medicine	加藤内科小児科医院 Katou Naika Syounika lin	27-2732	Kawara-machi
	Pediatrics	いづかファミリークリニック Iizuka Famili- Kurinikku	32-3330	Ikki-machi Tsuruga
	Surgery	七日町クリニック Nanokamachi Kurinikku	32-2411	Nishinanuka-machi
	Dentistry	筒井歯科医院 Tutui Shika lin	26-8371	Tenjin-machi
February 11th (Thu)	Internal medicine	いとう内科消化器科クリニック Ito Naika Shoukakika Kurinikku	38-3733	Monden-machi Hiyoshi
	Pediatrics	わたなべクリニック Watanabe Kurinikku	24-0506	Ikkimachi Matsunaga
	Surgery	力神堂ひぐち眼科 Rikishindou Higuchi Ganka	37-2977	Syouwa-machi
	Dentistry	千石デンタルクリニック Sengoku Dentaru Kurinikku	28-8211	Minamisengoku-machi
February 14th (Sun)	Internal medicine	蛸谷クリニック Ebitani Kurinikku	28-8868	Tenjin-machi
	Pediatrics	いとう子どもクリニック Ito Kodomo Kurinikku	27-4601	Monden-machi Kuroiwa
	Surgery	高村整形外科 Takamura Seikei Geka	28-3319	Monden-machi Nakano
	Dentistry	蓮沼歯科医院 Hasunuma Shika lin	28-7110	Higashisengoku 3-chome
February 21st (Sun)	Internal medicine	くらしげ内科小児科医院 KuraShige Naika Syounika lin	39-3550	Nakajima-machi
	Pediatrics	やまみこどもクリニック Yamami Kodomo Kurinikku	23-4115	Yamami-machi
	Surgery	前田眼科医院 Maeda Ganka lin	27-0707	Naka-machi
	Dentistry	みやぎ矯正歯科 Miyagi Kyouseishika	37-0418	Inta-nishi

February 23rd (Tue)	Internal medicine	あらい内科循環器科クリニック Arai Naika Junkankika Kurinikku	29-1133	Jousai-machi
	Pediatrics	扇町渡辺小児科アレルギー科医院 Ogimachiwatanabe Shounika Arerugi-ka lin	25-5515	Ogi-machi
	Surgery	えんどうクリニック Endou Kurinikku	33-0700	Ikkima-chi Kamega
	Dentistry	武藤歯科医院 Mutou Shika lin	27-1678	Nishisakae-machi
February 28th (Sun)	Internal medicine	アピオリウマチクリニック Apio Riumachi kurinikku	32-2277	Inta-nishi
	Pediatrics	いづかファミリークリニック Iizuka Famili- Kurinikku	32-3330	Ikkima-chi Tsuruga
	Surgery	舟田クリニック産科婦人科 Funada Kurinikku Sankafujinka	23-1103	Ikki-machi Tsuruga
	Dentistry	目黒歯科医院 Meguro Shika lin	23-1182	Ekimae-machi

Emergency medical care at night

Yakan Kyubyo center
夜間急病センター

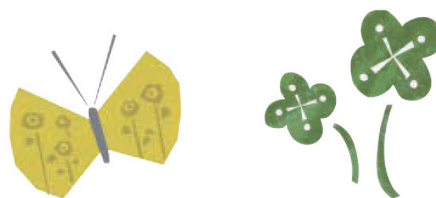
To prevent the spread of the novel coronavirus, the Night Emergency Clinic adopted a reservation-only policy. If you need a medical examination, please call ahead to make a reservation in advance.

Reservations: Night Emergency Clinic (Yakan Kyubyo Center) (28-1199)

▼ Attention:

Aizu Wakamatsu Area Code=0242 *Please dial the area code first. Medical examinations and treatments for the internal, pediatrics, and surgery departments are accepted from 9:00am until 5:00pm. Dentistry is from 10:00am to 4:00pm.

You can also check for available doctors during holidays on the city's mobile website. *Japanese only.



If you are receiving this newsletter and plan to change your address or leave Japan, please make sure to tell us of your new address or your departure date so that we may forward or cancel this newsletter.

Please contact us by phone, fax, or e-mail as soon as possible. Public information and Public Hearing Section (Kouhou Kouchou group), Aizu Wakamatsu City Hall 3-46 Higashi Sakae-machi, Aizu Wakamatsu City, Fukushima 965-8601

• TEL: 0242-39-1206 FAX: 0242-39-1402

• Email: hisho@tw.city.aizuwakamatsu.fukushima.jp

★ Visit our home page!

<http://www.city.aizuwakamatsu.fukushima.jp/> in English and 中文

City Public
HomepageLiving
Information